

المنطقة الحرة بصلالة
Salalah Free Zone
The world within your hands



Member of **ASAD** **اسياد**
أحدى شركات

الهيئة العامة للمناطق الاقتصادية الخاصة والمناطق الحرة
Public Authority for Special Economic Zones and Free Zones
Sultanate of Oman
سلطنة عمان



INVESTOR GUIDE

www.sfzco.com



ABOUT SULTANATE OF OMAN

Oman, an Arab country in the Southeastern coast of Arab Peninsula in Asia. It is boarded by the United Arab Emirates to the northwest, Saudi Arabia to the west, and Yemen to the southwest. It also overlooks the Arabian Sea on the southeast and the Oman Sea on the northeast.

The Sultanate of Oman is rapidly regaining its centuries-old position as a global trade hub and attractive place to do business. Investors around the world are increasingly showing interest in Oman as a gateway to the markets of the Middle East, African, Indian and Asian sub-continent. Politically and financially stable, the Sultanate is experiencing strong economic growth and ushering in large-scale reforms and investments to improve its global positioning. International investors choose Oman for a wide array of reasons, including its strategic location, political stability, business-friendly environment, abundant resources and dedication to providing investors with competitive costs and attractive incentives.



TOTAL AREA
309,500 Square
Kilometers



POPULATION
4,499,642 According to
NCSI January 2021



CAPITAL
Muscat



LANGUAGE
Arabic & widespread
use of English



CURRENCY
Omani Rial (OMR) pegged
to USD at 0.385 OMR



WEATHER
Hot & Humid in Summer,
Cool in Winter



COUNTRY CODE
+968



TIME ZONE
GMT +4



WEEKEND
Friday & Saturday



KEY FACTS

PRIME LOCATION

- Less than 2 hours from the major business centers of Asia and fast sailing times to Asia, Africa, Europe and North America
- More centrally located than Arabian Gulf, 2 days closer than UAE or KSA
- At the center of the east-west nexus joining markets in Europe, Asia and North America

INTERNATIONAL APPEAL

- Attracting US\$ 26.2 billion FDI by 2019
- Powerful concentration of international companies including BP, Shell, Vale, Air Liquide, Larsen & Toubro, Jindal Power & Steel, Huawei, Al Futtaim Group, Rio Tinto Alcan, Carrefour and LuLu
- Trade Agreements: Signatory of WTO, GCC common market, GAFTA, FTAs with US, Singapore, Iceland, Norway, Switzerland and Lichtenstein.

SAFE ENVIRONMENT

- Investor friendly legislative environment and no restrictions on repatriation of capital or profits
- Flat 15% corporate tax
- 100% foreign ownership allowed according to the new FDI law

INFRASTRUCTURE

- Globally ranked ports, airports, roads, and some of the most strategically placed ports in the world
- Some of the most competitively priced land and commercial property in the Gulf
- Has the third longest and largest type of optical fibers in the world, extending for 25 thousand kilometers and linking 18 countries between the countries of Asia, Africa, and Europe, will contribute to reducing the problems of communication between the Middle East and the West.

DIRECT ACCESS TO THE GROWING GC MARKET

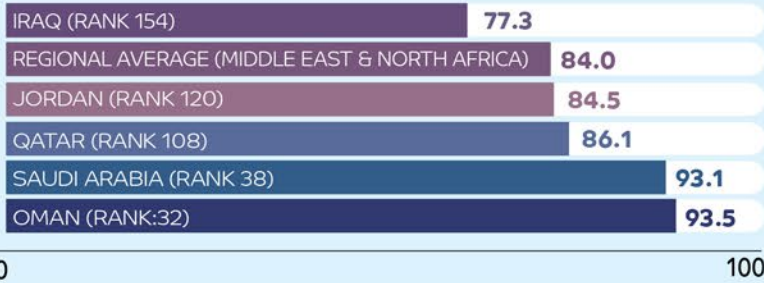
There are great advantages to Oman’s position as a key member of the GCC. Over half of the world’s oil resources are found among these nations. Goods can trade freely across the GCC countries, which are connected by land and Sea.

PREFERABLE BUSINESS ENVIRONMENT

With fully serviced Free Zones, a special economic zone and several industrial estates, Oman offers a business environment that is adept in catering to foreign businesses. This includes one-stop-shop services available from the Ministry of Commerce and Industry, as well as specific one-stop-shops serving tenants in each of the zones. The Omani government has made numerous strides to provide foreign investors with conveniences such as e-government services, preferable foreign investment regulations, and reduced administrative procedures. Investors in Oman will find any number of resources available to help them navigate the business environment through every stage of the investment process.

EASE OF DOING BUSINESS

According to “Doing Business Report 2020” prepared by World Bank Group, through which business regulation of 190 countries was studied, Oman obtained a score of 93 out of 100 in the ease of starting a business. The report indicates that Oman reduced the time and number of procedures to start a business by putting the one-stop shop into operation and simplifying licensing procedures.

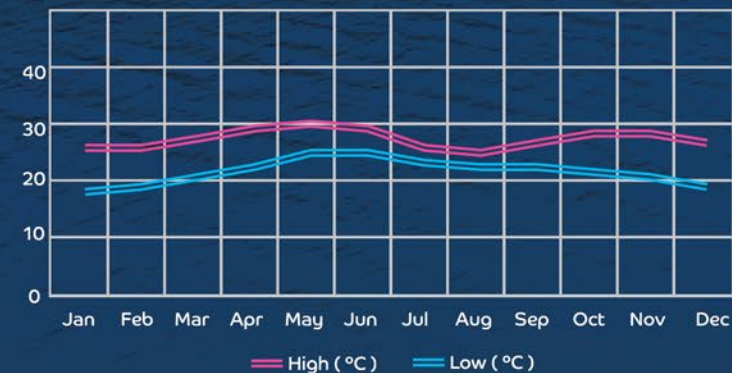


ABOUT SALALAH

Salalah is located on the Southern part of Oman, around 1000 kms away from Muscat. It is accessible from Muscat via road, air or sea.

Salalah is the second largest city of Sultanate of Oman. It is a coastal city, laying on the Indian Ocean. It is a unique place in the Arabian Peninsula. On the northern side, it has mountain range, with greenery and lakes (in Khareef Season). On the southern side, it has lovely beaches, which are sunny from September to June every year. Salalah is a city spread between these mountainous regions and the Indian Ocean. It is located in Dhofar Governorate. The population density in Salalah is about 429,919 according to NCSI IN 2020.

The temperature is moderate throughout the year and drops in the Monsoon, which is known locally as "Al-khareef" season, this is one of the reason why significant number of tourists from the Gulf and other countries arrive in Salalah in this period.



WHY SALALAH?



MARKET REACH

- Ability to cater to wider cross section of customers from a single location.
- Develop new markets with minimal incremental cost.
- Proximity to promising markets such as Yemen and Africa



EXCELLENT INFRASTRUCTURE

- Excellent road infrastructure and equipment availability to all GCC markets.
- Adequate open-air capacity with a growing airline network to region.
- It has one of the most important container, and busiest general cargo facilities in the region



SUSTAINABLE FINANCIAL BENEFITS

- Port of Salalah's terminal handling cost about 34 % cheaper than competing hub.
- The existence of a free zone reduces haulage cost and improves cost efficiencies.

CITY INFRASTRUCTURE

PORT OF SALALAH |

Operating since 1998, the Port of Salalah has become one of the most important container, and busiest general cargo facilities in the region, as well as the largest port in Oman. The Port is partly owned and managed by APM Terminals (Maersk), one of the largest container terminal operators in the world with a capacity of 5 Million TEUs and Ability to store in excess of 75,000 TEUs in yard.

Strategically located at the major East-West Shipping Lane, the Port of Salalah is viewed as the region's best-located port in order to access the Middle East, Indian Subcontinent, US East Coast, Africa Coast, Europe, Asia, GCC countries and Red Sea.

The port maintains excellent terminal capabilities for liquid bulk and mineral bulk handling, and with its six container berths and 18-metre deep channels, it can accommodate the world's largest container ships. In addition, port's state-of-the-art wave-dampening system reduces wave motion to expedite high-speed container unloading.

FACTS AND FIGURES

- On major international shipping routes with 2 weeks of major ports
- Area: 87 hectares
- About 25 weekly services providing direct connectivity to all major base ports in the world
- 130 Million Tons of diversified cargo of dry and liquid bulk, break-bulk and project cargo.
- 6 berths equipped with the state of the art equipment and IT systems
- Feeder vessels that can serve the upper Gulf, India, East Africa.
- Global direct main line connection to over 100 destinations.
- Handled 4.34 million TEUs in 2020

WORLD WIDE CONNECTIVITY Part of the AP Moller Maersk global markets



- ### SERVICES
- Storage
 - Cargo handling
 - Warehousing
 - Inland transportation
 - Ship to ship transfer operations

MAJOR SHIPPING LINES



SALALAH AIRPORT |

Salalah Airport is one of the most promising destinations, given that its excellence geographic position and the tourism growth it usually witnesses especially during Khareef season.

The airport was opened on November 11, 2015 with capacity of about two million passengers a year and that can be expanded to six million passengers. It was built with a construction of PTB floor size 65,638 m2, as it has huge potential in terms of systems, equipment and services provided therein, and can receive large aircraft types.

FACTS AND FIGURES

- Capacity of about 2 million passengers a year
- Can handle 100,000 tons per year to be increased to 400,000
- Ranking 4th in the airport category for 2 million passengers in 2019.
- Received a 5-star rating in the regional airports' category
- Qatar Airways, and Oman Air, operate regular weekly flights from Salalah airport.
- Total flights from Muscat to Salalah in a week is 163 (+3 flight per day)

AIR CARGO

Oman Air Cargo is the Cargo Division of Oman Air, the National Carrier of the Sultanate of Oman. Established in 2009, Oman Air cargo has carved a niche for itself as one of the leading air cargo carriers in the Middle East Region.

With a belly-hold capacity of over 80 flights per day, the new state-of-the-art cargo handling facility at the HUB in Muscat serves a vast network of scheduled services to Europe, Africa, Middle East, Indian Subcontinent and Far East.

Oman Air Cargo offers its customers access to over 150 destinations across the world covering all continents. The products and services offered by Oman Air Cargo range from transportation of general cargo to valuables, courier, hazardous goods, live animals and temperature-control goods such as pharmaceuticals, perishables, and much more.

HIGHLIGHTS

- Have e-cargo solutions
- Have a capacity of over 80 flights per day
- Access to over 150 destinations across the world covering all continents.

ROAD CONNECTIVITY |

- Well-developed road network within Oman and to adjacent GCC countries.
- Availability of adequate number of long distance trailers for movement within GCC
- About 2000 KM of additional roads laid in 2017 (last available data) with continued focus on overall infrastructure development
- The world economic forum's global competitive index for 2019, Ranked Oman the 10th in the road quality index, 15th in road connectivity.





Salalah Free Zone

Growth ^{Political stability}
Location
Enabler
Ease Global
Friendly
Comfortable Innovative
Natural resources

SALALAH FREE ZONE

Salalah free zone (SFZ) is a government owned company (Member of ASYAD group), located in Salalah city to benefit from its strategic location at the connection of key, east-west business routes. SFZ strategy is to attract foreign direct investment (FDI) through a set of business-friendly incentives such as:



30-year tax exemption.



100% Foreign ownership.



Customs duties exemption.



One Stop Shop services and access to Easy System for fast approvals.



No minimum capital Requirement.



Work Permits for 80% of Foreign Work Force.

SFZ has one of Middle East's most developed business environments fostering partnership and collaboration across industries and borders. Along with its strategic location, SFZ offers excellent infrastructure and support services providing turnkey facilities for both multinationals and start-ups where SFZ is pursuing to be a global leading hub for:

- **Chemicals & Materials Processing Sector**
- **Assembling, Packaging & Packing Sector**
- **Logistics and Distribution Sector**
- **Pharmaceuticals and Medical Supplies**
- **Renewable Energy**

SFZ is adjacent to one of the largest container ports in the world, the Port of Salalah, linking to Africa, the Middle East and Asia to different markets in Europe and the America.



SFZ VALUE PROPOSITION



At the center of the world, within 2 weeks shipping times of most markets with access to all modes of transports, including one of the world's most efficient ports.



Proximity to regional and global market such as South Asia, Africa, Middle East and Europe



Direct trade routes to the growing GCC market as well as India and Africa



Proximity to promising markets such as Yemen and Africa



Located in Politically and economically stable location



Resource abundant (oil, natural gas, copper, marble, limestone, gypsum, chromium)



Tax-free, no customs, full foreign ownership, access to financing in US Free Trade Environment



Access to Qualified Domestic & Expat Workforce.

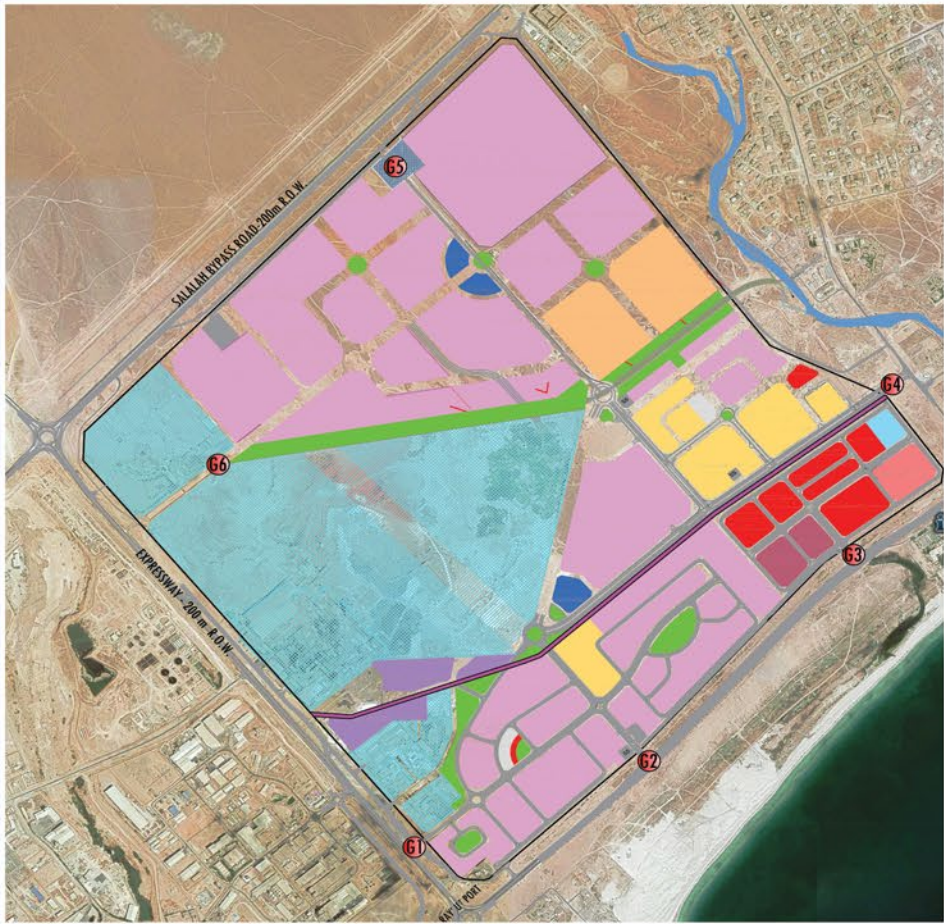


Environment friendly, low carbon footprint and sustainable business support.

MASTER PLAN

Salalah free zone area is about 21 million square meters, divided into two areas, Adhan and Raysut. The lands were planned according to the investment activity, as each plot was allocated to a specific type of activity

ADHAN

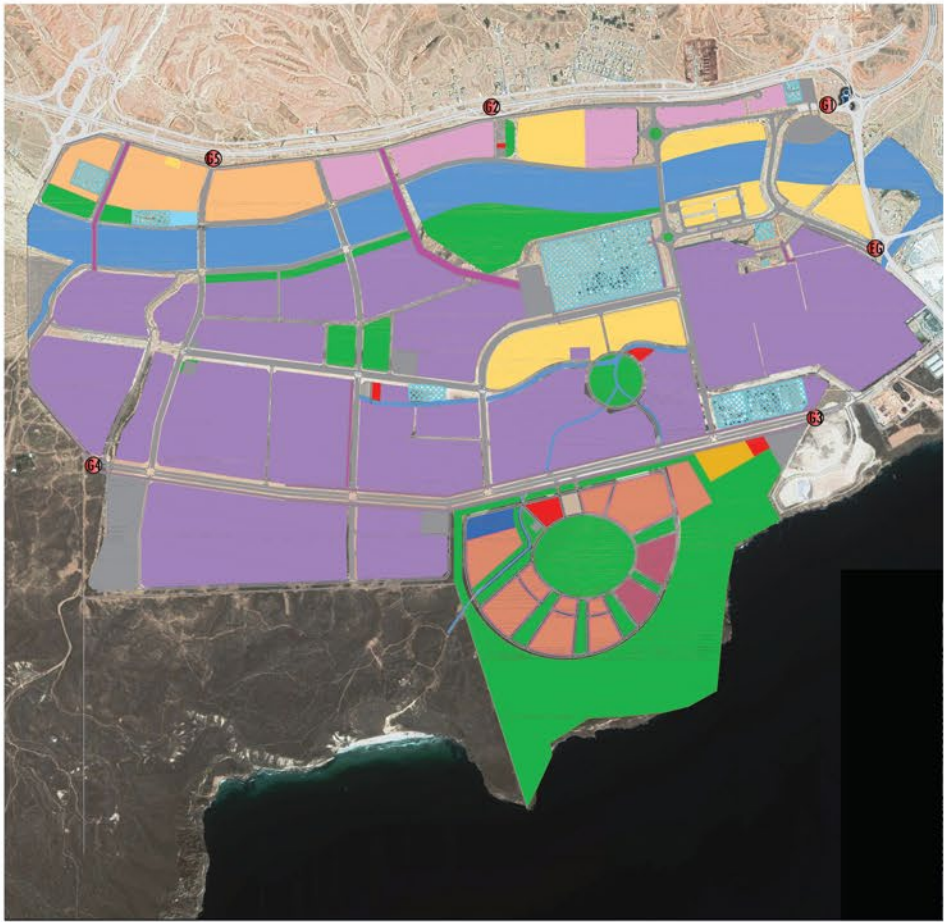


LEGEND	LAND USE IN ADHAN
	HEAVY INDUSTRY
	LIGHT&MEDIUM INDUSTRY
	LOGISTICS WAREHOUSES
	SFZCO OFFICES
	COMMERCIAL / SHOWROOMS
	HOSPITALITY/ HOTEL
	EDUCATIONAL / SCHOOL
	INTEGRATED RESIDENTIAL CITY(HOUSING)
	GOVERNMENTAL / CLINIC
	MASJID
	Gas Station
	PARKING AREAS
	THIRD PARTIES LAND
	UTILITIES
	PUBLIC SUBSTATIONS
	PARK, OPEN SPACES
	WADI / WATER CHANNEL
	UTILITY CORRIDOORS
	CIRCULATION AREA(ROAD-ROW)

Adhan is designed to facilitate for Commercial development (retailing, showrooms, office parks, professional service areas, IT parks etc), Logistics & Ware Houses and light and medium industries.

In addition to the above Adhan enable the provision of facilities like Hospital, Educational Institutions, Housing, Shopping Malls, to ensure the quality of life.

RAYSUT



LEGEND	LAND USE IN RAYSUT
	HEAVY INDUSTRY
	LIGHT&MEDIUM INDUSTRY
	LOGISTICS WAREHOUSES
	LOGISTICS OFFICES
	COMMERCIAL / SHOWROOMS
	HOSPITALITY/ HOTEL
	EDUCATIONAL / SCHOOL
	HIGHTECH CITY (IT,Robotics and Artificial intelligence)
	INTEGRATED RESIDENTIAL CITY(HOUSING)
	GOVERNMENTAL / CLINIC
	MASJID
	PARKING AREAS
	THIRD PARTIES LAND
	UTILITIES
	PUBLIC SUBSTATIONS
	PARK, OPEN SPACES
	WADI / WATER CHANNEL
	UTILITY CORRIDOORS
	CIRCULATION AREA(ROAD-ROW)

Raysut is designed to facilitate for heavy Industries, light and medium industries (heavy manufacturing, petrochemicals, etc.,) logistics and warehousing, commercial development (Urban center).

In addition to the above Raysut land enable the provision of facilities like Hospital, educational institutions, housing, shopping malls, to ensure the quality of life.

SFZ is a true enabler of ease of doing business

SFZ provide one stop-shop services for clearance of the government transaction, issue of licenses, registration of investors and many other services



Fast Track Customs Procedures

- Seamless Import, Export and Re-export procedures
- Efficient Certificate of Origin issuance process



وزارة التجارة والصناعة وترويج الاستثمار
Ministry of Commerce, Industry & Investment Promotion



الجمعية العامة للتجارة والصناعة
Oman Chamber of Commerce & Industry

Seamless Registration & Licensing

- Simple registration and licensing process
- Whole process is completed in OSS



مركز سند للخدمات
Sanad Services Center

On-Premises Visa Support

- All visa related request can be completed in Sanaad office located in OSS
- Seven types of visa are offered for companies to service their employees, partners and family



الهيئة العامة للمناطق الاقتصادية الخاصة والمناطق الحرة
Public Authority for Special Economic Zones and Free Zones
سلطنة عمان
Oman

Esystem for One Stop Shop

- E-system that facilitate all registration processes including all licenses and permits.

SERVICES PROVIDED ARE

- Issuance of Labor Clearance,
- Transfer of Sponsorship,
- Cancellation of Employees,
- Attestation of Employees Contract,
- Visa Issuance

VISAS AVAILABLE ARE

- Express,
- Resident/ Work Visa,
- Investor Visa
- Multiple Entry Visa,
- Family Visa,
- Transfer Visa and
- Others



SALALAH FREE ZONE PRODUCTS



SFZ Offers a range of products specially designed to meet a variety of business needs. Simply select the type that suits your business best.

- Lands
- Warehouses & Light Industrial Units (LIU)
- Offices and Business support units
- Outlets
- Customize Solutions



LANDS

SFZ provides plots of various sizes for short and long term lease, ideal for companies to construct their own facility. Each plot varies from 1,000sqm to larger sizes according to the specific requirements of individual customers.

Lands' main features include:

- Road infrastructure.
- Electricity and water infrastructure.
- Telecommunication infrastructure.
- Plots allocated in zones to locate customers with similar need.
- 24 hour security within the SFZ boundaries.



WAREHOUSES & LIGHT INDUSTRIAL UNITS (LIU)

SFZ offers pre-built warehouses and LIU to meet customers' needs for high quality storage and light manufacturing. The pre-built warehouses are thermally insulated, purpose-built units available on rent and are fitted with office space.

These units have several access points:

- Ramps for forklift.
- Loading dock for containers and trucks.
- Fire exit doors.
- Main entrance for office areas.

Warehouses & LIUs' main features include:

- Electricity & water infrastructure ready.
- Parking facilities available.
- Fitted with fire alarm and fire fighting system.
- Washroom facilities in both office and warehouse.
- 24 hour security within the SFZ boundaries.





OFFICES AND BUSINESS SUPPORT UNITS (BSS)

Ready-to-use, fully furnished and equipped offices, besides unfurnished office spaces, ensuring each customer the ability to express their own individual style. SFZ tailors each BSS to suit the needs of each customer and works to tailor interior layout and design to requested specifications. BSS designed for your short term or long term requirements.

Each office is equipped with:

- Round-the-clock workstation access with network connections.
- Meeting and conference rooms, equipped with audio-visual equipment.
- Telecommunication infrastructure.
- Parking facilities available.
- 24 hour security with CCTV.

Customers using BSS facilities can Upgrade to a fully-fledged office when they require and enjoy the SFZ community.



OUTLETS

SFZ headquarter building has a choice of outlets spread across the building available for rent, enabling you to sell your products within SFZ. Customers can establish the outlets with ease and convenience.

Every outlet is fully equipped with the following:

- Electricity and water infrastructure.
- Telecommunication infrastructure.
- Parking facilities available.
- 24 hours security within the building.



CUSTOMIZE DEVELOPMENT SOLUTIONS

You can choose tailor-made solutions when you cannot find suitable ready-made products. Salalah Free Zone provides customized development solutions that allow you to fully meet your operational needs. If you need a special solution, just inform SFZ's Business Development team about the specific requirements.



REGISTRATIONS AND LICENSING

REGISTRATION AND LICENSING

Registering a new Free zone company in Salalah free zone takes only 60 minutes from receiving a complete application.

There are two types of entities, formation for set up legal entities that permit investors to establish their business to suit individual requirements.

In order to form a legal entity within SFZ you can choose one of the following formation types:



Free Zone Company (FZC)

FZC- This type of entity formation is principally Limited Liability Company (LLC) within SFZ. Registration as FZC permits the investor for a multiple shareholders.

Documents required for establishing FZC:

- ✓ Brief Project/Summary / Description.
- ✓ Document Application Forms.
- ✓ Passport copy of Owner/Manager. Company profile.
- ✓ Memorandum of Association & Articles of Association.
- ✓ Power of Attorney Appointing a Representative.
- ✓ Bank Account Statement for the last 6 months.



Free Zone Establishment (FZE)

FZE- This type of entity formation is principally establishment within SFZ. Registration as FZE permits the investor for a single shareholder.

Documents required for establishing FZE:

- ✓ Project Brief / Summary / Description
- ✓ Document Application Forms.
- ✓ Passport copy of Owner / Manager.
- ✓ Company Profile
- ✓ Bank Account Statement for the last 6 months

Licenses

The type of license you need to operate at SFZ is depend on the activity your business participates in. There are five groups of licenses.



Commercials



Industrial



Service

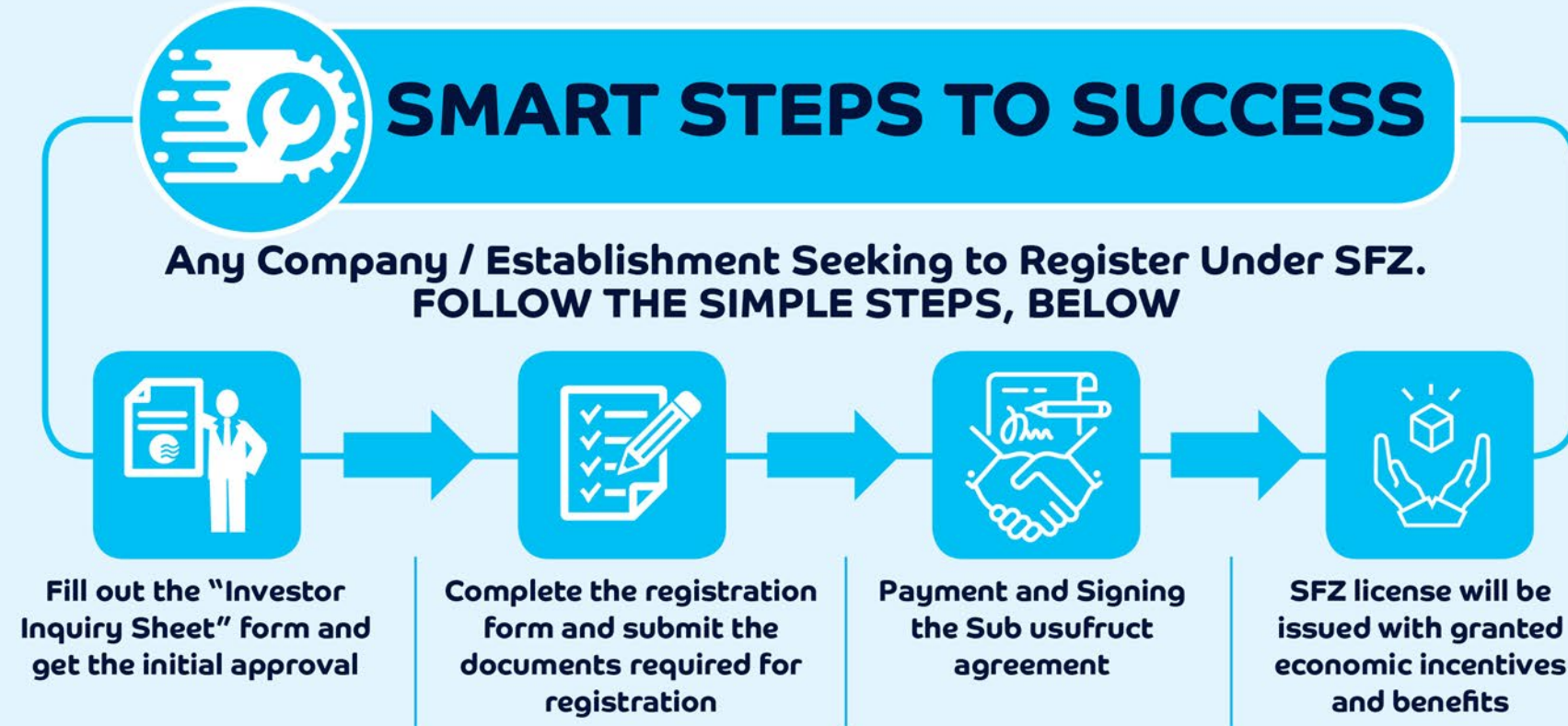


Real Estate



Tourism

Registration process



REGISTRATION AND LICENSE FEES



License Type (Annual Fees / OMR)

Commercial License	1100
Industrial License	1200
Service License	1300
Tourism License	1500
Real Estate License	1500

Annual Rent

The annual rent depends on the type of the leased facility and its area. To know the details, you can contact the business development team

%15 of the total annual rent is paid as a services charge*

ENVIRONMENTAL PERMITS

Some activities require an environmental permit prior to setting up project in Salalah Free Zone. Type of permit varies based on type, scale, and complexity of the project.

OSS facilitates the application process for environmental permits and our environment specialist will guide you throughout the approval process.

OPENING BANK ACCOUNT

The banking platform in Oman has widened its wings to serve and support business industries ranging from a small start-up to a well-established MNC. Moreover, the Central bank has introduced Corporate Internet Banking (CBI) that provides the opportunity for the bank to provide internet-based solutions for a speedy and smooth process from one's comfort zone

Typical requirements to open a bank account are:

- Copy of the commercial registration and authorized signatories form
- Copy of Oman Chamber of Commerce and Industry (OCCI) affiliation certificate
- Application signed and sealed by an authorized signatory
- Deposit of the capital amount stated in the Commercial Register

CONSTRUCTION PERMIT AND ENDORSEMENT OF BUILDING COMPLETION CERTIFICATE

A working company shall obtain a plot work permit before commencing activities on its plot. The issuance of the permit shall be when Salalah Free Zone (SFZ), Technical Department and maybe other government authorities, if required, approve all civil drawings of the project. There are basic requirements that need to be observed during the design stage of a project as outlined in the work permit procedures. After completion of the construction, SFZ will conduct necessary site inspections before endorsing the building completion certificate.

GATE ENTRY PASS

Any registered Free zone working company shall be able to generate gate passes for its employees, contractors, clients, and visitors. There is a nominal fee for gate entry pass for individuals and vehicles.

ELECTRICITY

Dhofar Power Company (DPC) supplies electricity to Salalah Free Zone investors. SFZ shall process the applications for new connections. For more information, please visit utility provider website (<http://dpcoman.com/>).

Electricity Permitted Tariffs

(Permitted Tariffs for Electricity Supply for Commercial (1st of January 2021)

Category	(Tariff Structure (kWh/Month	Tariff (Baisa/ (Kw
Large Customers	-	CRT
Non Resi- dential	Winter Tariff (From the first of January to the end of April – from the first of October until (the end of December	21
	Summer Tariff (from the first (of May – September	29
Agriculture and Fisheries	3000 - 0	12
	6000 – 3001	16
	More than 6000	24

(Permitted Tariffs for Electricity Supply for Residential (1st of January 2021)

Category	(Tariff Structure (kWh/Month	(Tariff (Baisa/Kw
Citizen's Account	2000 – 0	15
	4000 – 2001	20
	More than 4000	30
Residen- tial and additional accounts	500 – 0	20
	1500 – 501	25
	More than 1500	30

www.apsr.om

WATER SERVICES

Directorate General of Water in Dhofar Governorate provides water services in Salalah Free Zone (SFZ). SFZ shall process the applications for connections.

(Permitted Tariffs for Water (1st of January 2021)

Category	Tariff Unit	Tariff in 2021
Non Residential	(Baisa/Gallon)	4.5
	(OMR / Cubic Meter)	0.99
Omani	(Baisa/Gallon)	2.5
	(OMR / Cubic Meter)	0.55
Non Omani and ad- ditional accounts	(Baisa/Gallon)	3
	(OMR / Cubic Meter)	0.66

www.apsr.om

TELECOMMUNICATIONS SERVICES

Salalah Free Zone is well connected to telecommunications services offered mainly by two telecommunication service providers, OMANTEL and OOREDOO. You have the choice to select any solution according to their needs. SFZ shall process the applications for connections.

Adhan area is completely covered with optical fibers. It is supported by 4G technology and antennas for 4G and 3G coverage of mobile phones. Soon, it will be supported by 5G technology.

For more information, please visit utility provider website (www.omantel.net.om, www.ooredoo.om)

ISO CERTIFICATION

Salalah Free Zone is ISO certified in quality, health, safety and environment, and it can guide you on how to obtains ISO 9001 certification which will directly benefit your organization. Once the institution obtains this accreditation certificate, it will gain international recognition for its conformity to quality management standards, and this accreditation will confirm the company’s commitment to the requirements approved in the business sector and will enhance its competitive position.

SUBLEASING

Subleasing of plots, warehouses, and offices are allowed in Salalah Free Zone (SFZ) subject to prior approval under certain conditions and warranties. The working company subleasing to another Free Zone company shall take full liability to fulfill the obligations stipulated in the subleasing agreement towards SFZ.



Investor Inquiry Sheet

Details and Information	
Name of Contact person:	Date submitted:
Company Name:	Designation:
E-mail:	Country:
Telephone No.:	Website:
Mobile No.:	Fax No.:
Facilities & Utilities Required	
Land (sq.m):	Warehouse (sq.m):
Office (sq.m):	Power (Peak Demand in MW):
Water (CBM/Day): <input type="checkbox"/> Industrial water <input type="checkbox"/> Treated water <input type="checkbox"/> Domestic water	Natural gas demand /Day:
Other Requirements:	Total Number of Employment:
Type of Investment	
Type of operation requested to be set-up in SFZCo	<input type="checkbox"/> Industrial (Activity):
	<input type="checkbox"/> Commercial (Activity):
	<input type="checkbox"/> Service / Logistics (Activity):
	<input type="checkbox"/> Real Estate (Activity):
	<input type="checkbox"/> Tourism (Activity):
Project Short Brief (Please provide sketch showing line of Assembly & approximate dimensions of plot)	<hr/> <hr/> <hr/> <hr/>
Import	Type of Materials: Quantity/Volume:
Export	Type Materials: Quantity/ Volume:

Mode of Transportation	<input type="checkbox"/> Air Freight _____ (%)	
	<input type="checkbox"/> Sea Freight _____ (%)	
	<input type="checkbox"/> Road Freight _____ (%)	
Size of Investment (USD)		
Expected Operational Date Qtr/Year		
How did you hear about US?		
<input type="checkbox"/> SFZCo website	<input type="checkbox"/> Exhibitions / Conference	<input type="checkbox"/> Friends
<input type="checkbox"/> Businessmen	<input type="checkbox"/> Government Bodies	<input type="checkbox"/> Others
Comments (If Any)		
<div></div>		
<div></div>		
<div></div>		

FOR SFZ COMMERCIAL DIRECTORATE OFFICIAL USE	
Recommendations and Remark	
BDM	SBDM
Date: Sign:	Date: Sign:
Commercial Director	
<input type="checkbox"/> Approved	
<input type="checkbox"/> Reject	
<input type="checkbox"/> Need Details	
<input type="checkbox"/> Hold	
<input type="checkbox"/> Other	Date: Sign:

DISCLAIMER

The party or the parties who refer to the Investor guide clearly understand that this guide is an informative document and to be used for information purpose only. There will be no legal liability on the part of SFZCO for any omissions or commissions. This document cannot be used as a legal documents for entering into any agreement, contract etc.



**Salalah makes growing
your business easy**

Contact us:

info@sfzco.com

www.sfzco.com

المنطقة الحرة بصلالة
Salalah Free Zone
The world within your hands



Salalah: P.O. Box: 87, Auqad, P.C: 217, Sultanate of Oman

Tel.: +968 23132500, Fax: +968 23132400

Muscat: P.O. Box: 258, Jawharat A'Shatti,
P.C: 134, Sultanate of Oman

Tel.: +968 24601333, Fax: +968 23132400